

CANOPY ID CONVERSION MOCKUP

Existing End



Proposed End



Existing Site



Proposed Site



Date: December 20, 2024

PROJECT
BINDER

Site #: -

Prepared for:
PETRO CANADA
Location: Nanaimo, BC
4286 Departure Bay Rd

Prepared by:
Country Signs
T: 1.800.748.0277
info@countrysigns.ca
countrysigns.ca



Project Manager:
Rebecca Garland
T: 416.678.9981

After Hours:
Brad Butterfield
T: 416.254.3002

Brand Standards /
Design Development:
Vinotha Muthaiah



PETRO-CANADA Site #:-	Date: December 30, 2024	Designer: Vinotha Muthaiah	This is an original unpublished drawing created by Country Signs Inc. It is submitted for your personal use in connection with a project being prepared for you by Country Signs Inc. It is not to be shown to anyone outside your organization, nor is it to be used, reproduced or exhibited in any fashion.	Appdt:		 INSTALLER	 CLIENT	PHOTO COMPLETED WORK, ALL SIDES ■ INSTALLED AS PER ARTWORK ■ IS FULLY CLEANED & ILLUMINATED ■ PHOTO INTERIOR OF ALL RETROFIT PYLON S		T: 1.800.748.0277 E: info@countrysigns.ca W: countrysigns.ca
	Location: Nanaimo BC, 4286 Departure Bay Rd	Rev. No: -		Appdt:						
	Job Number:	CONCEPT ART: SIGNAGE DIMENSIONS SUBJECT TO: SITE SURVEY, ENGINEERING & CITY APPROVAL								

RECEIVED
DVP477
2025-APR-02
Current Planning



<div>PETRO-CANADA</div> <div>Site #:-</div>	Date: December 30, 2024	Designer: Vinotha Muthaiah	This is an original unpublished drawing created by Country Signs Inc. It is submitted for your personal use in connection with a project being prepared for you by Country Signs Inc. It is not to be shown to anyone outside your organization, nor is it to be used, reproduced or exhibited in any fashion.	Appdt:		<div><div><div></div><div></div><div></div><div></div></div><div>INSTALLER</div><div>CLIENT</div></div> <div>PHOTO COMPLETED WORK, ALL SIDES</div> <div>■ INSTALLED AS PER ARTWORK</div> <div>■ IS FULLY CLEANED & ILLUMINATED</div> <div>■ PHOTO INTERIOR OF ALL RETROFIT PYLON S</div>	<div><div><div></div><div></div><div></div><div></div></div><div>COUNTRY</div><div>SIGNS</div></div> <div>T: 1.800.748.0277</div> <div>E: info@countrysigns.ca</div> <div>W: countrysigns.ca</div>
	Location: Nanaimo BC, 4286 Departure Bay Rd	Rev. No. :-		Appdt:			
	Job Number:	CONCEPT ART: SIGNAGE DIMENSIONS SUBJECT TO: SITE SURVEY, ENGINEERING & CITY APPROVAL					

RECEIVED
DVP477
2025-APR-02
Current Planning

CANOPY DAY / NIGHT ILLUMINATION



<div>PETRO-CANADA</div> <div>Site #: -</div>	Date: December 30, 2024	Designer: Vinotha Muthaiah	<div>This is an original unpublished drawing created by Country Signs Inc. It is submitted for your personal use in connection with a project being prepared for you by Country Signs Inc. It is not to be shown to anyone outside your organization, nor is it to be used, reproduced or exhibited in any fashion.</div>	Appd:		<div><div></div><div>INSTALLER</div></div> <div><div></div><div>CLIENT</div></div>	<div>PHOTO COMPLETED WORK, ALL SIDES</div> <div>■ INSTALLED AS PER ARTWORK</div> <div>■ IS FULLY CLEANED & ILLUMINATED</div> <div>PHOTO INTERIOR OF ALL RETROFIT PYLON S</div>	<div></div> <div>T: 1.800.748.0277</div> <div>E: info@countrysigns.ca</div> <div>W: countrysigns.ca</div>
	Location: Nanaimo BC, 4286 Departure Bay Rd	Rev. No.: -		Appd:				
	Job Number:	CONCEPT ART: SIGNAGE DIMENSIONS SUBJECT TO: SITE SURVEY, ENGINEERING & CITY APPROVAL						

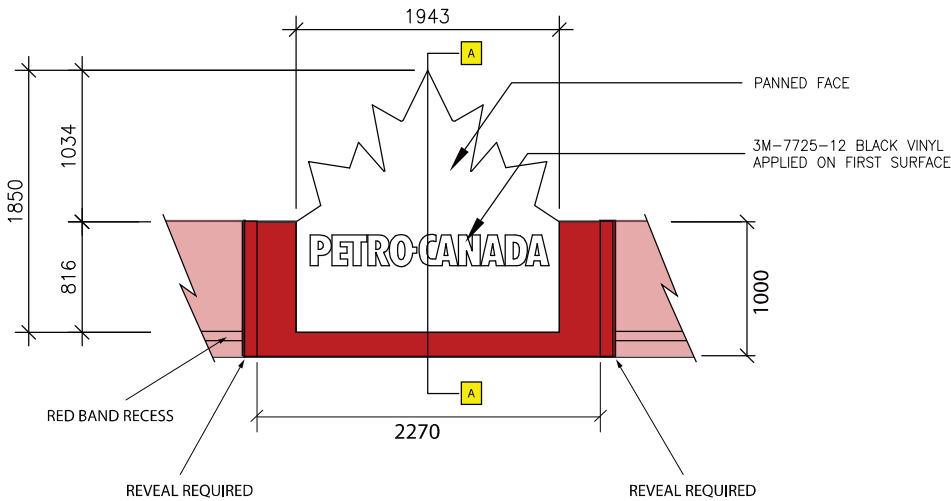
RECEIVED
DVP477
2025-APR-02
Current Planning

PROPOSED ICON ACM CANOPY PANEL

AREA OF LOGOS: 38.7 SQ FT OR 3.6m
WEIGHT: 265LBS OR 120kg



NEW ICON ASSEMBLY



PROPOSED ICON ASSEMBLY

1A/B ILLUMINATED PETRO CANADA ICON 1943mm x 1850mm



<div>PETRO-CANADA</div> <div>Site #:-</div>	Date: December 30, 2024	Designer: Vinotha Muthaiah	This is an original unpublished drawing created by Country Signs Inc. It is submitted for your personal use in connection with a project being prepared for you by Country Signs Inc. It is not to be shown to anyone outside your organization, nor is it to be used, reproduced or exhibited in any fashion.	Appd:		<div><div></div><div>INSTALLER</div></div> <div><div></div><div>CLIENT</div></div>	<div>PHOTO COMPLETED WORK, ALL SIDES</div> <div>■ INSTALLED AS PER ARTWORK</div> <div>■ IS FULLY CLEANED & ILLUMINATED</div> <div>PHOTO INTERIOR OF ALL RETROFIT PYLON S</div>	<div></div> <div>T: 1.800.748.0277</div> <div>E: info@countrysigns.ca</div> <div>W: countrysigns.ca</div>
	Location: Nanaimo BC, 4286 Departure Bay Rd	Rev. No: -		Appd:				
	Job Number:	CONCEPT ART: SIGNAGE DIMENSIONS SUBJECT TO: SITE SURVEY, ENGINEERING & CITY APPROVAL						

RECEIVED
DVP477
2025-APR-02
Current Planning



RECEIVED
DVP477
2025-APR-02
Current Planning

Designer:	Vinotha Muthaiah
Rev. No.:	-

App'd:

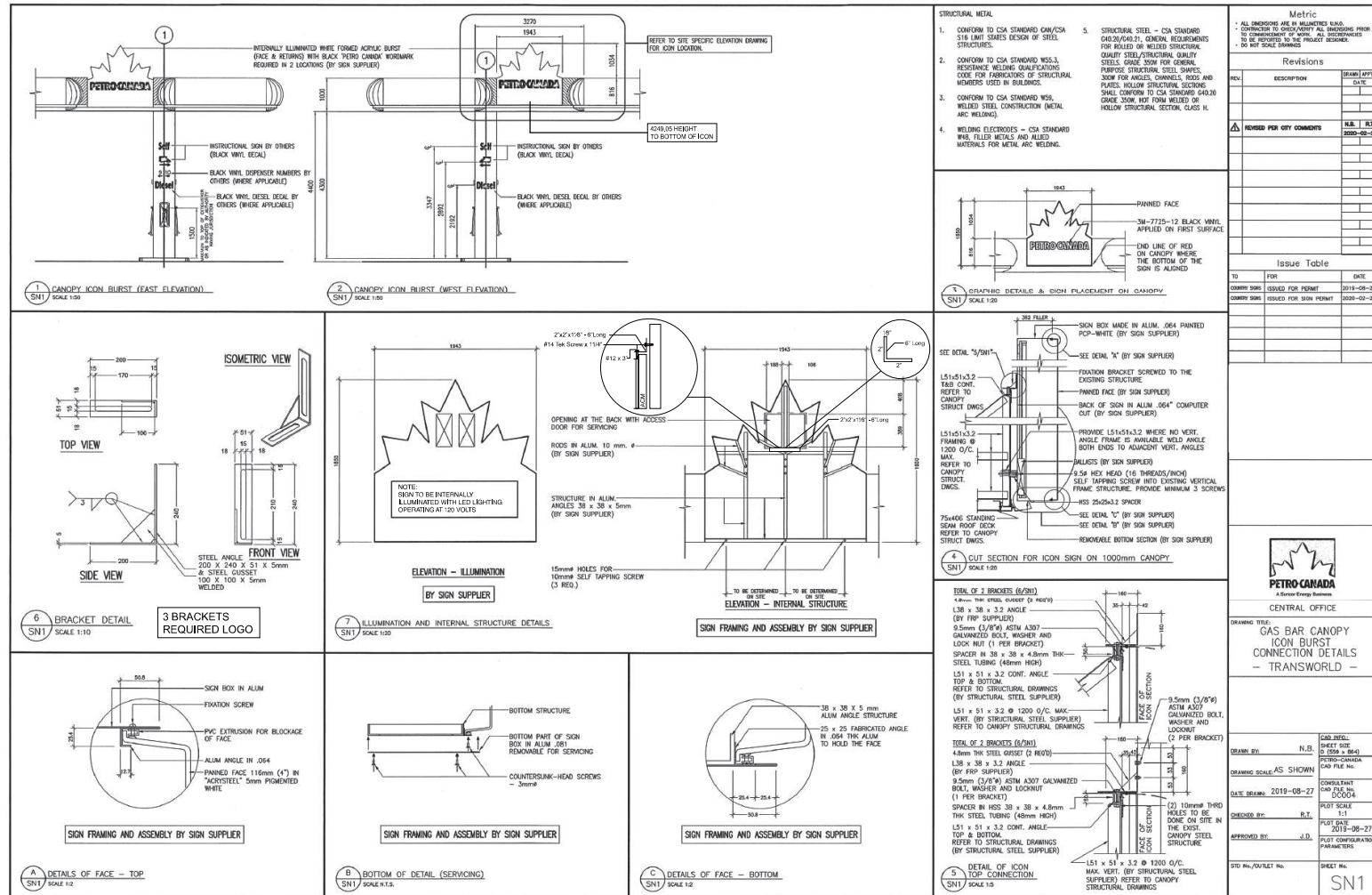
App'd:



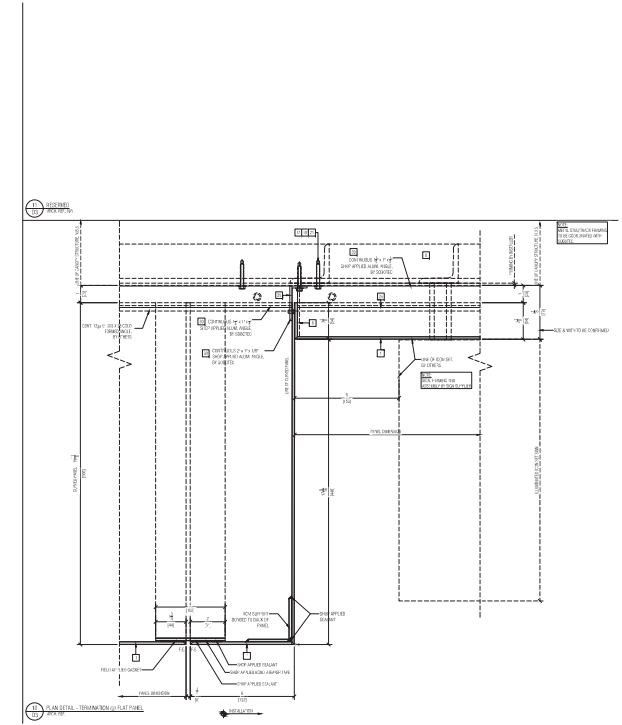
RECEIVED
DVP477
2025-APR-02
Current Planning

① A

① B



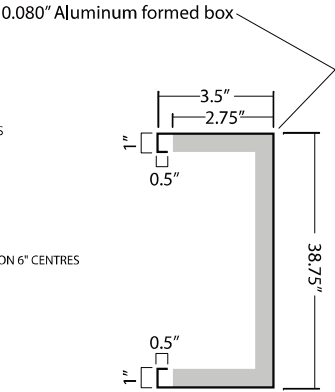
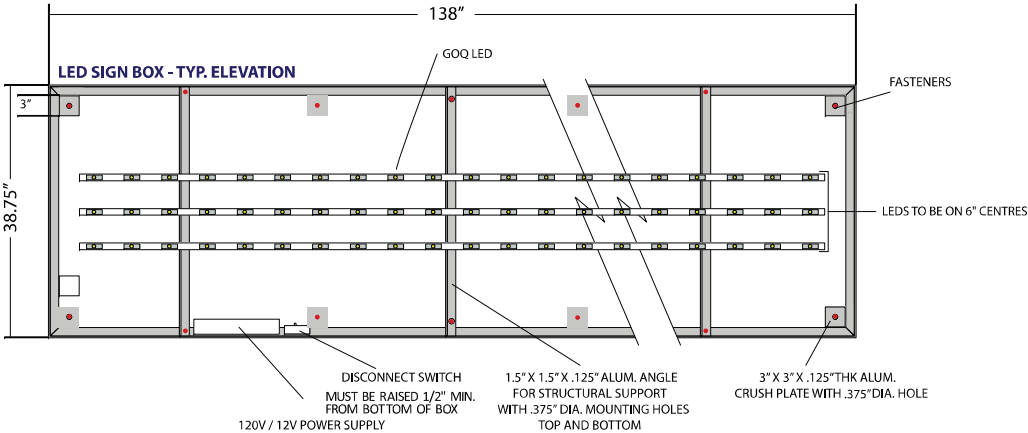
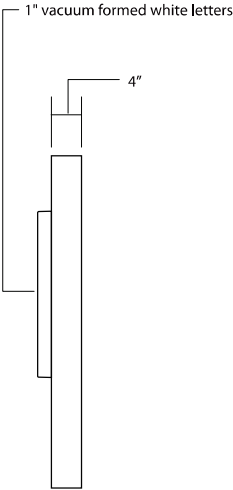
OUTLET #00000 7



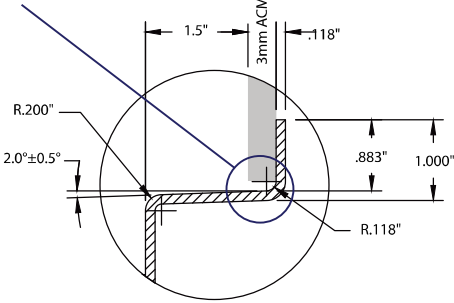
- FASTENERS BY INSTALLER:**
- TO STEEL FRAMING: _____ NON CORROSIVE STEEL #12 SELF DRILLER
- TO WOOD: _____ NON CORROSIVE STEEL 1/4" TAPPING SCREW
- TO CONCRETE/MASONRY: _____ 1/4" ULTACON OR SIMILAR (MIN. 1 1/2" EMBEDMENT
OR AS PER CALCULATIONS IF APPLICABLE)
- FASTENERS SUPPLIED BY SUBOTEC:**
- CLIP TO PANEL FRAME: _____ #12 x 1" HHW TENS SELF DRILLER, "CLIMASEAL"

RECEIVED
DVP477
2025-APR-02
Current Planning

2A ILLUMINATED WORDMARK 144" x 39.375"



ENSURE GAP BETWEEN ACM AND LETTER RETURN IS TIGHT TO REDUCE HALO FLOODING (LESS THE .125")

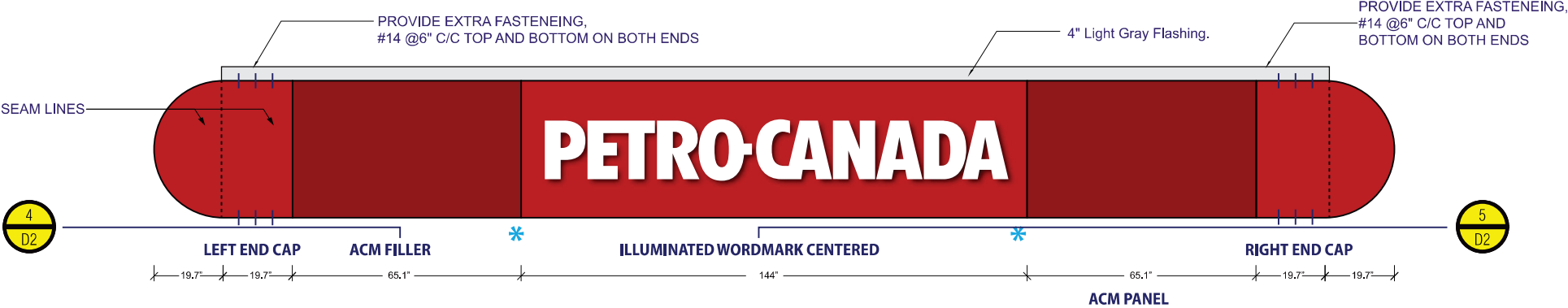


VACUUM FORMED DETAIL - NTS

<div><div>PETRO-CANADA</div><div>Site #: -</div></div>	Date: December 30, 2024	Designer: Vinotha Muthaiah	This is an original unpublished drawing created by Country Signs Inc. It is submitted for your personal use in connection with a project being prepared for you by Country Signs Inc. It is not to be shown to anyone outside your organization, nor is it to be used, reproduced or exhibited in any fashion.	App'd:	<div><div><div><div></div><div></div><div></div><div></div></div><div><div>PHOTO COMPLETED WORK, ALL SIDES</div><div>■ INSTALLED AS PER ARTWORK</div><div>■ IS FULLY CLEANED & ILLUMINATED</div><div>■ PHOTO INTERIOR OF ALL RETROFIT PYLON S</div></div></div><div><div>INSTALLER</div><div>CLIENT</div></div></div>	<div><div><div>COUNTRY SIGNS</div></div><div><div>T: 1.800.748.0277</div><div>E: info@countrysigns.ca</div><div>W: countrysigns.ca</div></div></div>
	Location: Nanaimo BC, 4286 Departure Bay Rd	Rev. No.: -		App'd:		
	Job Number:	CONCEPT ART: SIGNAGE DIMENSIONS SUBJECT TO: SITE SURVEY, ENGINEERING & CITY APPROVAL				

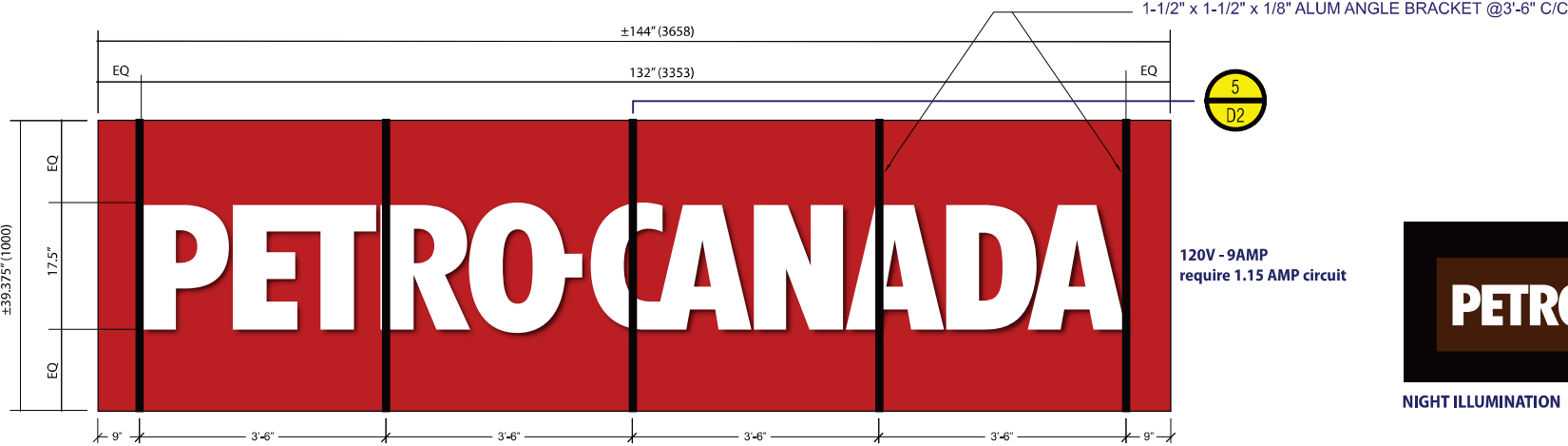
RECEIVED
DVP477
2025-APR-02
Current Planning

2A PROPOSED END CAP, FILLERS, WORDMARK SIGNBOX W LED ILLUMINATED PUSH THRU LETTERS - ELEVATION FACING ROAD



- PETRO CANADA COLOUR KEY**
- MAGENTA GRADIENT 65%: DIESEL PX 0C / 65M / 63Y / 0K
 - PMS YELLOW 109 / 3M 3630-22: DIESEL PX
 - DIGITAL PRINTED SHADOW ON CLEAR VINYL: C-STORE 28C / 100M / 100Y / 36K
 - PMS RED 185 / 3M 3630G-2662 2C / 100M / 100Y / 1K
 - WHITE VINYL 3630-20 OR TRANSLUCENT WHITE FACE
 - BLACK VINYL 7725-12 (O)
 - DARK GREY VINYL 7725-21 OR SC900-855 (O)
 - BULK PYLON, FRAMES & RETAINERS BM "ROCKPORT GREY" HC-105

2A ILLUMINATED WORDMARK 3353mm x 443mm

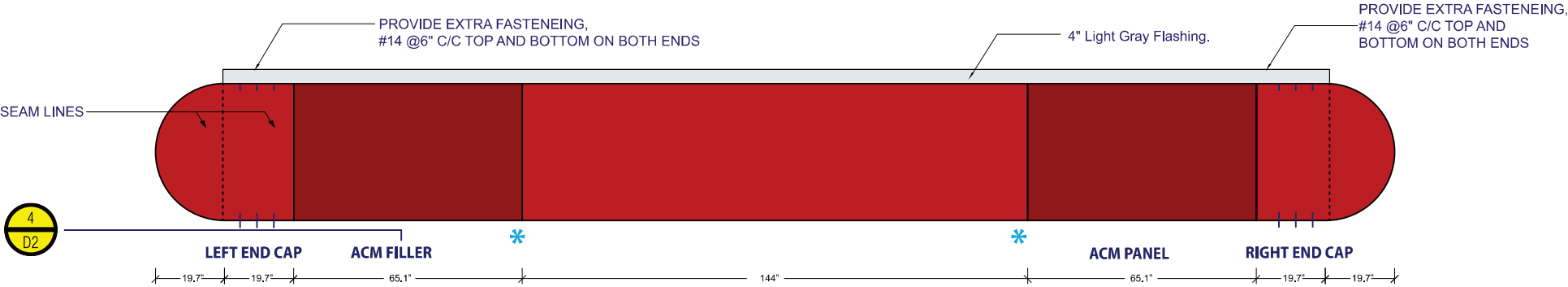


NIGHT ILLUMINATION

PETRO-CANADA Site #:	Date: December 30, 2024	Designer: Vinotha Muthaiah	This is an original unpublished drawing created by Country Signs Inc. It is submitted for your personal use in connection with a project being prepared for you by Country Signs Inc. It is not to be shown to anyone outside your organization, nor is it to be used, reproduced or exhibited in any fashion.	Appdt:		<div>PHOTO COMPLETED WORK, ALL SIDES</div> <div>■ INSTALLED AS PER ARTWORK</div> <div>■ IS FULLY CLEANED & ILLUMINATED</div> <div>■ PHOTO INTERIOR OF ALL RETROFIT PYLON S</div>	<div></div> <div>T: 1.800.748.0277</div> <div>E: info@countrysigns.ca</div> <div>W: countrysigns.ca</div>
	Location: Nanaimo BC, 4286 Departure Bay Rd	Rev. No.:		Appdt:			
	Job Number:	CONCEPT ART: SIGNAGE DIMENSIONS SUBJECT TO: SITE SURVEY, ENGINEERING & CITY APPROVAL					

RECEIVED
DVP477
2025-APR-02
Current Planning

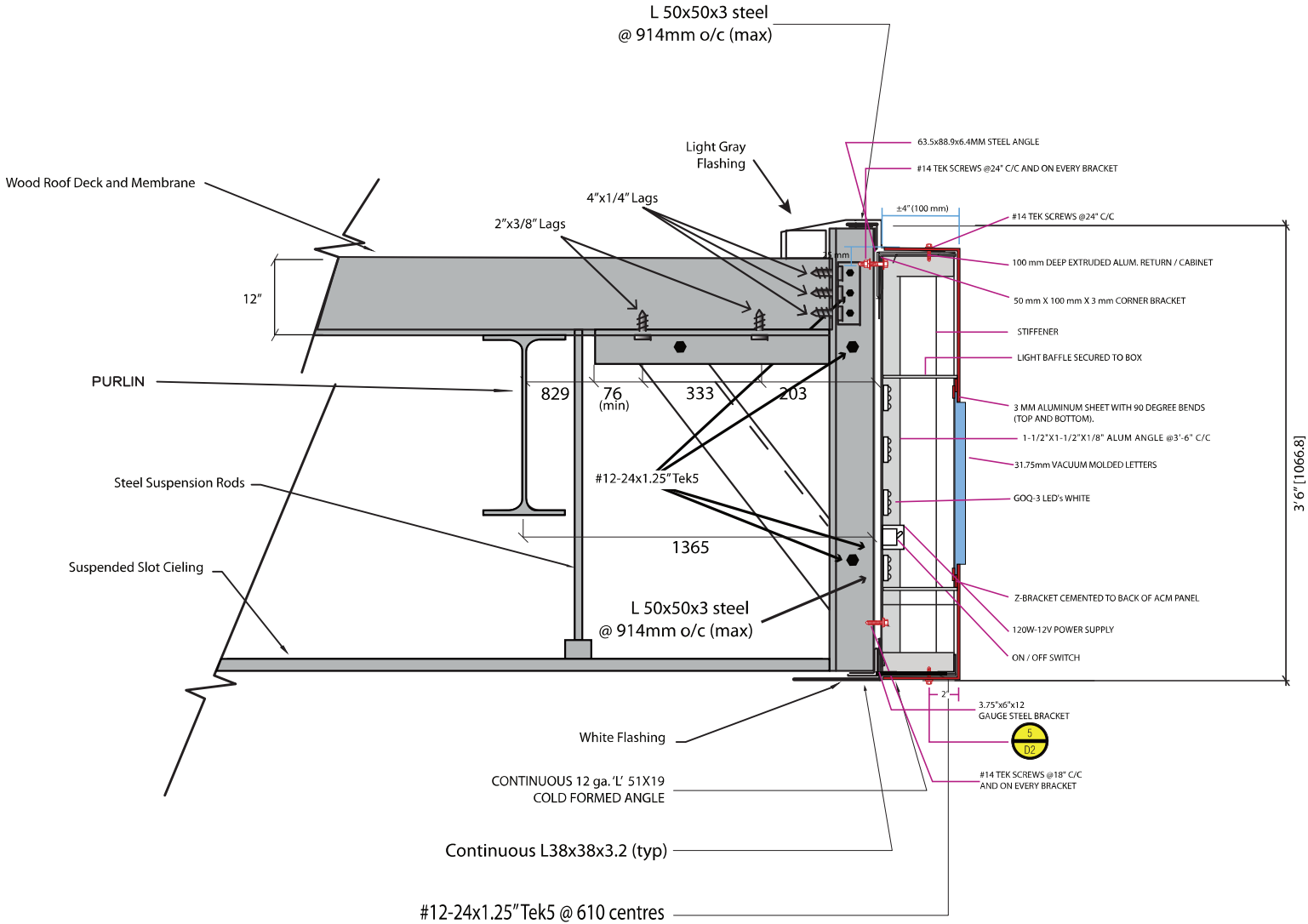
2B PROPOSED END CAP, FILLERS- ELEVATION FACING ROAD



<div>PETRO-CANADA</div> <div>Site #:</div>	Date: December 30, 2024	Designer: Vinotha Muthaiah	<div>This is an original unpublished drawing created by Country Signs Inc. It is submitted for your personal use in connection with a project being prepared for you by Country Signs Inc. It is not to be shown to anyone outside your organization, nor is it to be used, reproduced or exhibited in any fashion.</div>	Appd:		<div><div><div><div><div></div></div><div><div></div></div></div><div><div>INSTALLER</div><div>CLIENT</div></div></div><div><div>PHOTO COMPLETED WORK, ALL SIDES</div><div><div><div>■</div> INSTALLED AS PER ARTWORK</div><div><div>■</div> IS FULLY CLEANED & ILLUMINATED</div><div><div>■</div> PHOTO INTERIOR OF ALL RETROFIT PYLON S</div></div></div></div>	<div><div><div>COUNTRY SIGNS</div></div><div><div>T: 1.800.748.0277</div><div>E: info@countrysigns.ca</div><div>W: countrysigns.ca</div></div></div>	
	Location: Nanaimo BC, 4286 Departure Bay Rd	Rev. No.: -		Appd:				
	Job Number:	CONCEPT ART: SIGNAGE DIMENSIONS SUBJECT TO: SITE SURVEY, ENGINEERING & CITY APPROVAL						

RECEIVED
DVP477
2025-APR-02
Current Planning

2A PROPOSED LED-ILLUMINATED ACM CANOPY SECTION THRU TYP - PETRO CANADA WORD MARK



PETRO-CANADA
Site #: -

Date: December 30, 2024
Location: Nanaimo BC, 4286 Departure Bay Rd
Job Number:

Designer:
Vinotha Muthalaah
Rev. No: -

This is an original unpublished drawing created by Country Signs Inc. It is submitted for your personal use in connection with a project being prepared for you by Country Signs Inc. It is not to be shown to anyone outside your organization, nor is it to be used, reproduced or exhibited in any fashion.

Appd:
Appd:

CONCEPT ART: SIGNAGE DIMENSIONS SUBJECT TO: SITE SURVEY, ENGINEERING & CITY APPROVAL



PHOTO COMPLETED WORK, ALL SIDES

- INSTALLED AS PER ARTWORK
- IS FULLY CLEANED & ILLUMINATED

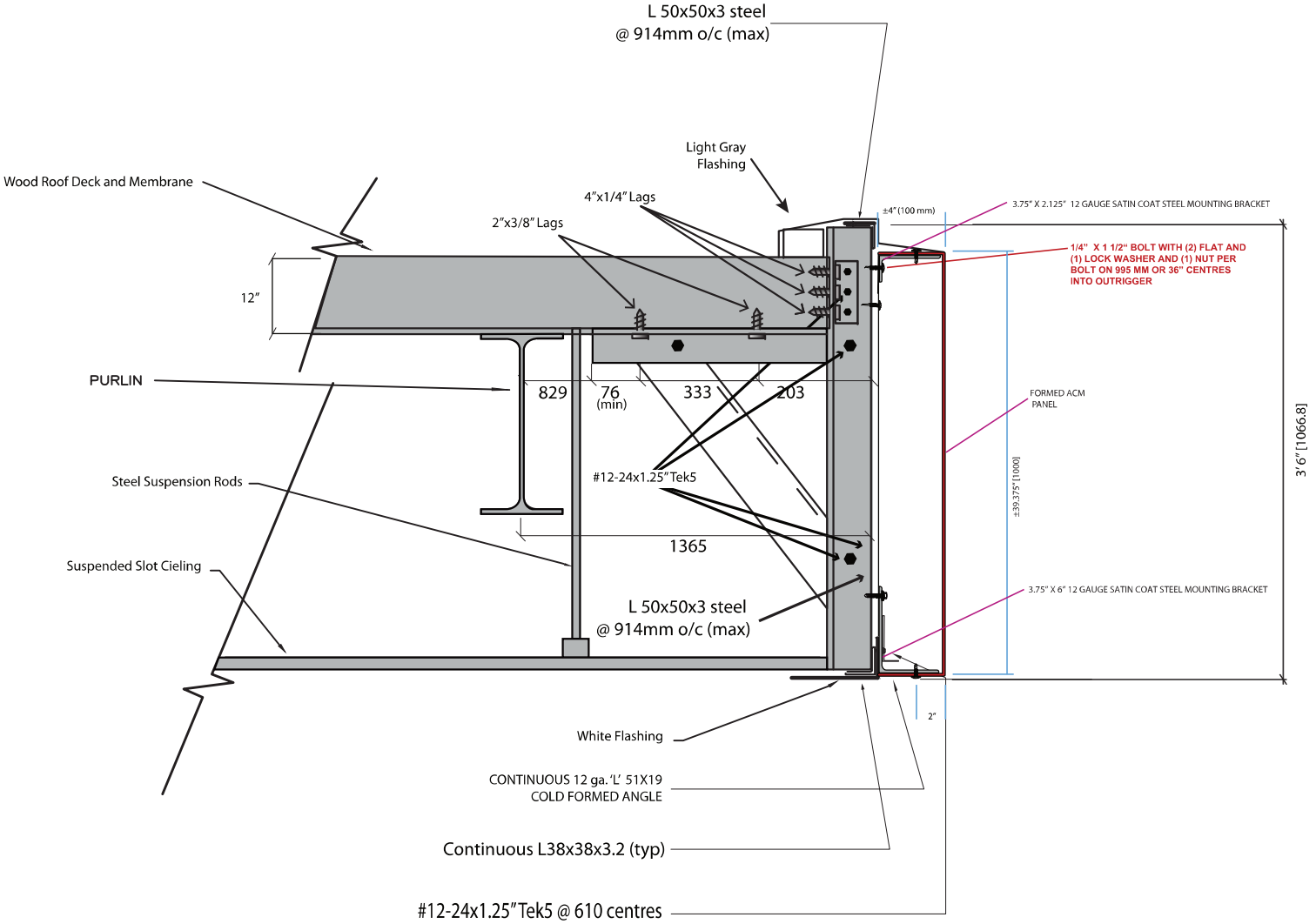
PHOTO INTERIOR OF ALL RETROFIT PYLON S



T: 1.800.748.0277
E: info@countrysigns.ca
W: countrysigns.ca

RECEIVED
DVP477
2025-APR-02
Current Planning

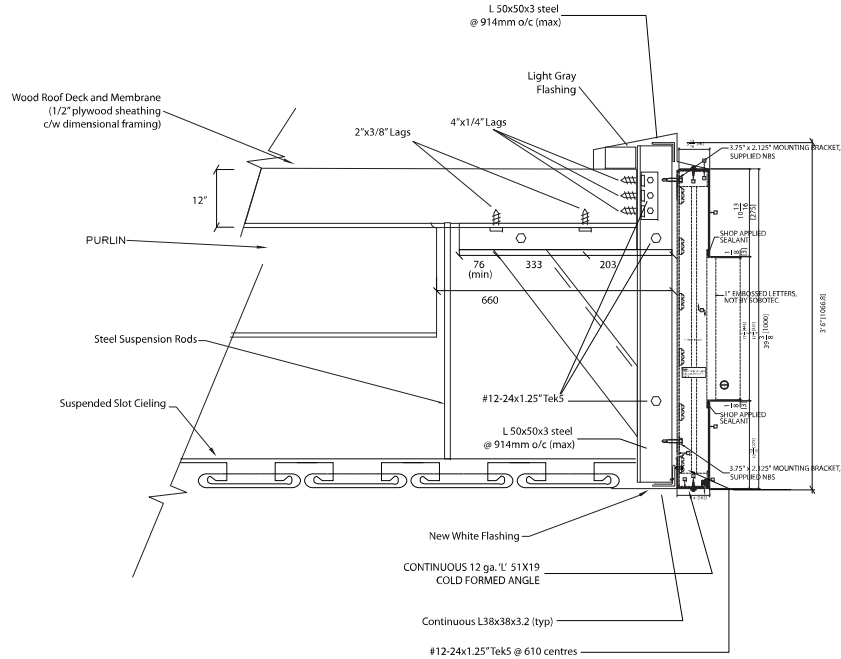
2B PROPOSED CANOPY END - NON-ILLUMINATED ACM CANOPY SECTION THRU TYP. - FILLER



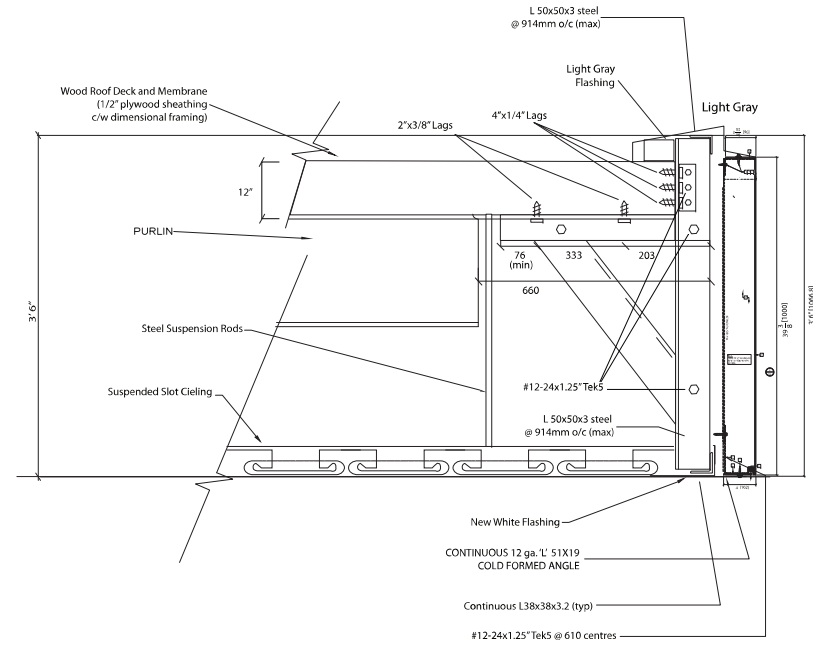
PETRO-CANADA Site #: -	Date: December 30, 2024	Designer: Vinotha Muthaliah	This is an original unpublished drawing created by Country Signs Inc. It is submitted for your personal use in connection with a project being prepared for you by Country Signs Inc. It is not to be shown to anyone outside your organization, nor is it to be used, reproduced or exhibited in any fashion.	Appd:	<div><div></div><div>INSTALLER</div></div> <div><div></div><div>CLIENT</div></div>
---------------------------	-------------------------	--------------------------------	--	-------	--

RECEIVED
DVP477
2025-APR-02
Current Planning

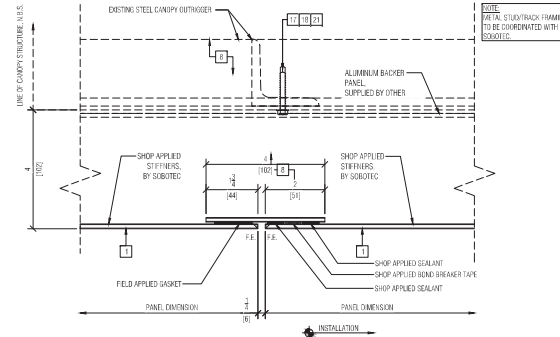
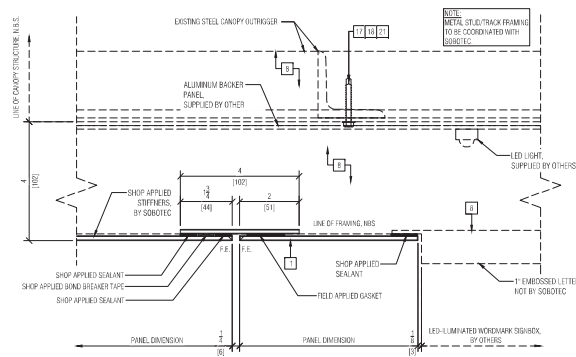
2A CANOPY FLAT PANEL DETAIL



8 D2 RESERVED ARCH. REF. N/A



7 D2 PLAN DETAIL - LED-ILLUMINATED WORDMARK SIGNBOX @ FLAT PANEL ARCH. REF.



PETRO-CANADA
Site #: -

Date: December 30, 2024
Location: Nanaimo BC, 4286 Departure Bay Rd
Job Number:

Designer: Vinotha Muthaiah
Rev. No: -
This is an original unpublished drawing created by Country Signs Inc. It is submitted for your personal use in connection with a project being prepared for you by Country Signs Inc. It is not to be shown to anyone outside your organization, nor is it to be used, reproduced or exhibited in any fashion.
CONCEPT ART: SIGNAGE DIMENSIONS SUBJECT TO: SITE SURVEY, ENGINEERING & CITY APPROVAL

Appd:
Appd:



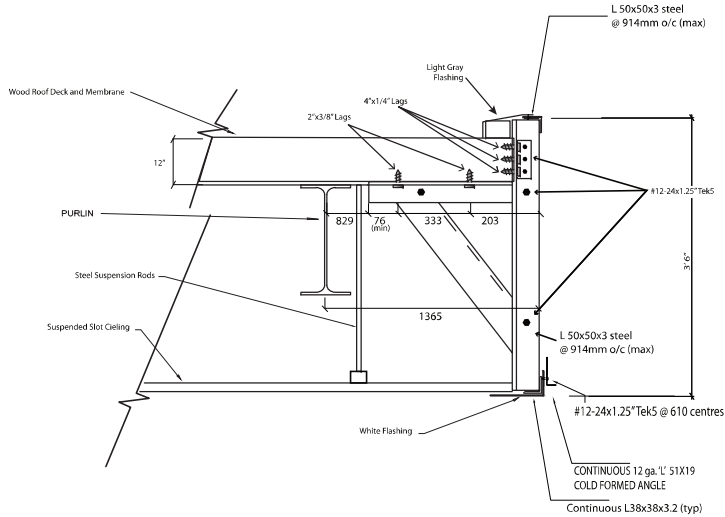
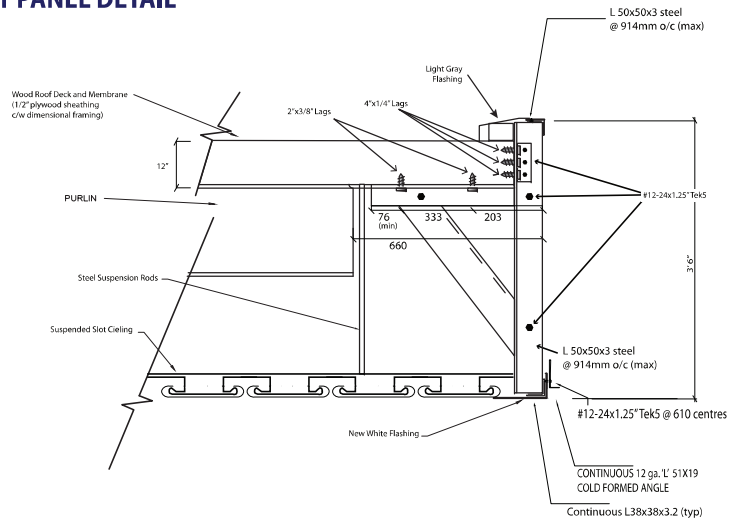
PHOTO COMPLETED WORK, ALL SIDES
■ INSTALLED AS PER ARTWORK
■ IS FULLY CLEANED & ILLUMINATED
PHOTO INTERIOR OF ALL RETROFIT PYLON S



T: 1.800.748.0277
E: info@countrysigns.ca
W: countrysigns.ca

RECEIVED
DVP477
2025-APR-02
Current Planning

2A CANOPY FLAT PANEL DETAIL



<div>PETRO-CANADA</div> <div>Site #:</div>	Date: December 30, 2024	Designer: Vinotha Muthaiah	This is an original unpublished drawing created by Country Signs Inc. It is submitted for your personal use in connection with a project being prepared for you by Country Signs Inc. It is not to be shown to anyone outside your organization, nor is it to be used, reproduced or exhibited in any fashion.	App'd:	<div><div><div></div></div><div><div></div></div></div> <div>INSTALLER CLIENT</div>	<div>PHOTO COMPLETED WORK, ALL SIDES</div> <div><div><input checked="" type="checkbox"/> INSTALLED AS PER ARTWORK</div><div><input checked="" type="checkbox"/> IS FULLY CLEANED & ILLUMINATED</div></div> <div>PHOTO INTERIOR OF ALL RETROFIT PYLON S</div>	<div><div><div></div></div><div><div></div></div></div> <div>T: 1.800.748.0277</div> <div>E: info@countrysigns.ca</div> <div>W: countrysigns.ca</div>
	Location: Nanaimo BC, 4286 Departure Bay Rd	Rev. No.: -		App'd:			
	Job Number:	CONCEPT ART: SIGNAGE DIMENSIONS SUBJECT TO: SITE SURVEY, ENGINEERING & CITY APPROVAL					

RECEIVED
DVP477
2025-APR-02
Current Planning